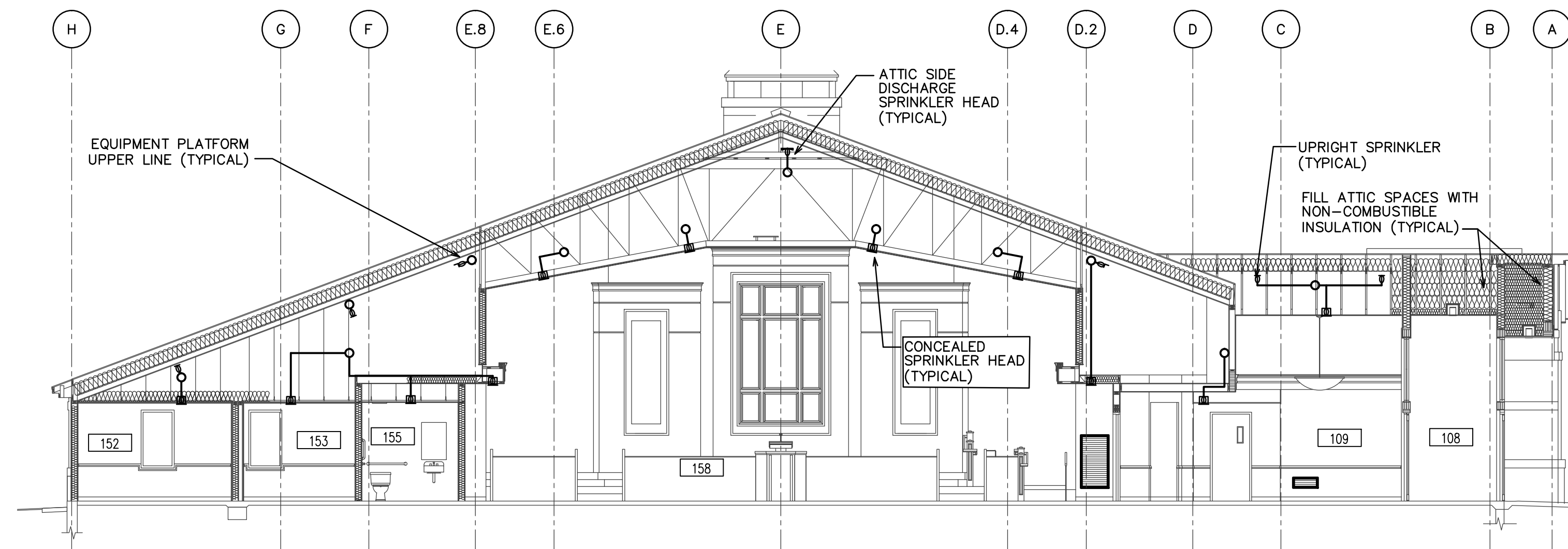
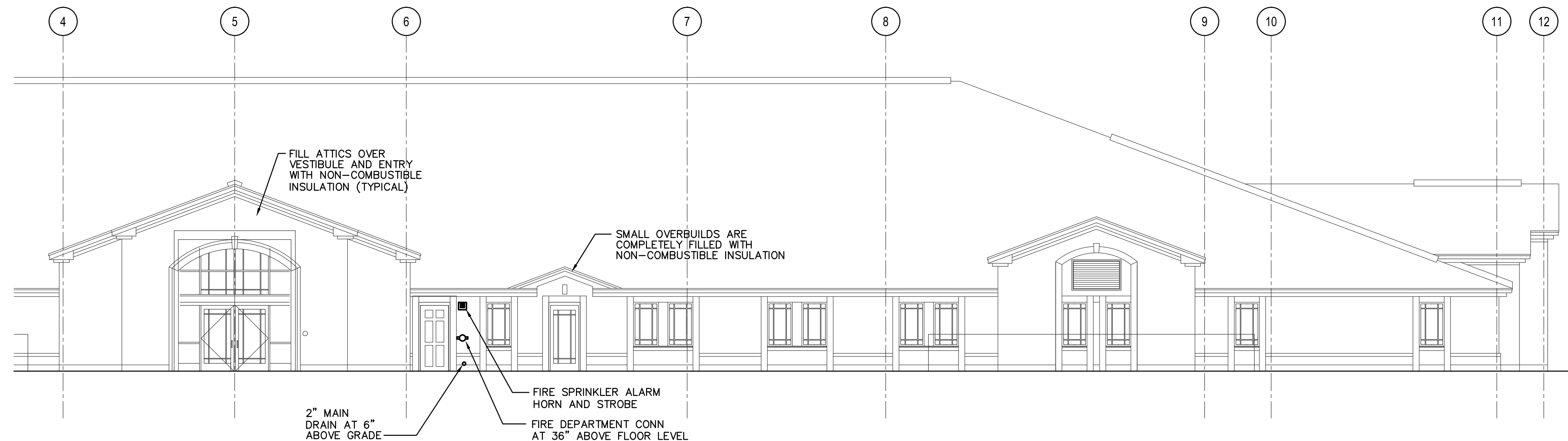


**A BUILDING SECTION THROUGH STAGE**  
1/8" = 1'-0"



**B BUILDING SECTION THROUGH CHAPEL**  
1/8" = 1'-0"



**C BUILDING ELEVATION**  
1/8" = 1'-0"

FIRE SPRINKLER LEGEND			
	UPRIGHT HEAD ON LINE		PRESSURE GAUGE
	CONCEALED PENDENT HEAD		LOW TEMPERATURE SENSOR PROVIDED BY DIVISION 28
	CONCEALED DRY PENDENT HEAD		VALVE TAMPER SWITCH
	SIDE DISCHARGE ATTIC HEAD		FLOW SWITCH
	DRY SIDEWALL HEAD RECESSED		FLEXIBLE COUPLING
	DRY SIDEWALL HEAD		SWAY BRACING
	SIDEWALL HEAD RECESSED		ANGLE VALVE
	SIDEWALL HEAD		PIPE SUPPORT
	TYCO MODEL AP ATTIC UPRIGHT HEAD		SPRINKLER PIPING
	INSPECTOR'S TEST VALVE		FIRE DEP. CONNECTION
	BALL VALVE 2" & SMALLER		PIPE IN FLOOR STRUCTURE
	BUTTERFLY VALVE 2 1/2" & LARGER		
	PIPE UP		PIPE DOWN

HEAD COUNT							
SPRINKLERS	K-FACTOR	ORFICE	FINISH	TYPE	CANOPY	DEGREE	QUANTITY
	5.6	1/2"	WHITE	WET PENDENT	CONCEALED	155	
	5.6	1/2"	BRONZE	UPRIGHT	N/A	212	
	5.6	1/2"	WHITE	DRY PENDENT	CONCEALED	155	
	5.6	1/2"	BRONZE	ATTIC SIDEWALL DRY SIDEWALL	N/A	212	
	5.6	1/2"	WHITE	DRY SIDEWALL RECESSED		155	
E				(E=EXTENDED COVERAGE)			
	5.6	1/2"	WHITE	WET SIDEWALL RECESSED		155	
	5.6	1/2"	BRONZE	WET SIDEWALL	N/A	212	
	5.6	1/2"	BRONZE	DRY SIDEWALL	N/A	212	
	5.6	1/2"	BRONZE	ATTIC AP UPRIGHT		212	

**HYDRAULIC DESIGN INFORMATION FOR OFFICE WET SYSTEM**

REMOTE AREA = \_\_\_\_\_ SQUARE FEET

DENSITY = \_\_\_\_\_ GPM/SQUARE FEET

RISER BASE \_\_\_\_\_ GPM \_\_\_\_\_ PSI

**HYDRAULIC DESIGN INFORMATION FOR MEZZANINE WET SYSTEM**

REMOTE AREA = \_\_\_\_\_ SQUARE FEET

DENSITY = \_\_\_\_\_ GPM/SQUARE FEET

RISER BASE \_\_\_\_\_ GPM \_\_\_\_\_ PSI

**HYDRAULIC DESIGN INFORMATION FOR ATTIC WET SYSTEM**

REMOTE AREA = \_\_\_\_\_ SQUARE FEET

DENSITY = \_\_\_\_\_ GPM/SQUARE FEET

RISER BASE \_\_\_\_\_ GPM \_\_\_\_\_ PSI

**HYDRAULIC DESIGN INFORMATION FOR CHAPEL WET SYSTEM**

REMOTE AREA = \_\_\_\_\_ SQUARE FEET

DENSITY = \_\_\_\_\_ GPM/SQUARE FEET

RISER BASE \_\_\_\_\_ GPM \_\_\_\_\_ PSI

**WATER FLOW TEST**

TEST DATE: \_\_\_\_\_ TEST TIME: \_\_\_\_\_

STATIC: \_\_\_\_\_ RESIDUAL: \_\_\_\_\_

FLOW: \_\_\_\_\_ LOCATION: \_\_\_\_\_

TEST BY: \_\_\_\_\_

CONTRACTOR TO CONFIRM AND RETEST AS NEEDED.

NOTES:  
1. SEE FS101 FOR GENERAL NOTES.

ORIGINAL DRAWING SIGNED BY: DWAYNE C. SUDNEEKS  
DATE ORIGINAL SIGNED: May 23, 2017  
ORIGINAL ON FILE AT ENGINEERED SYSTEMS ASSOCIATES  
1355 EAST CENTER, POCATELLO, IDAHO 83201

**Engineered Systems Associates**  
1355 EAST CENTER  
POCATELLO, IDAHO 83201  
PHONE: (208) 233-0501  
FAX: (208) 233-0529  
EMAIL: esa@engsystems.com  
ESA JOB NUMBER: 17031

PROFESSIONAL ENGINEER  
REGISTERED  
5762  
STATE OF IDAHO  
DWAYNE C. SUDNEEKS

Architect / Engineer:  
**GENE C. ULMER ARCHITECT**  
1506 S. SECRETARIAT WAY  
Nampa, ID 83686  
(208) 899-0874 \* gculmerarch@aol.com

Date: May 23, 2017

Stamp:

Middleton Heritage 09T SC  
Middleton Idaho Stake  
1332 Cornell Street  
Middleton, Idaho 83644

Project for:  
**THE CHURCH OF JESUS CHRIST OF LATTER-DAY SAINTS**

Mark	Date	Rev.	Description

Project Number: 21701  
Plan Series: HET-SCS-09-07  
Property Number: 50034331601

Sheet Title:  
**FIRE SPRINKLER ELEVATION AND SECTIONS.**

Sheet:  
**FS201**

17031-FS201.dwg - 05/22/2017 - 2:47 PM